

FEATURES

Technology	PM (Power Meter) TURN
Energy Metering	Voltage(V), Current(A), Active Power(kW), Power Factor, kWh
Metering per Input Line	Yes (Branch Circuit and Total Current) Accuracy 1%
Metering per Output Receptacle	No
Remote Outlet Switching	No
Ethernet Port	No
Networking Protocols	No
PDU Cascading	No
Power Share	No
Display	4 Digital-7 Segment Display LED
Residual Current Monitoring	No
USB Ports	No
Environmental Sensors	No

INPUT

Plug	IEC 60309 1P+N+E 6h 32A 250V SINGLE PHASE
Lead Length	3 meter
Cable Type	H07RN-F3G4.0 mm ²
Max. Input Load	32A
Rated Input Voltage	190-250V Single phase
Frequency	50-60Hz
Power Capacity	7360W

OUTPUT

Rated Output Voltage	190-250V Single phase
Output Types	24 IEX (C13/C19) combo (Max rate 16A) EN61984+UL498 certified
Overload Protection	(2) 1 Pole Carling 16A L31-X1-00-445-H62-D3

CHASSIS

Dimensions (W x D x H)	1162 x 55 x 55.4 mm
Color	RAL 9004 black powder coat
Mounting Options	4 mounting options (see page 2)
Required Torque for Mounting Screws	≥2.54N·m (25.9kgf·cm or 22.4 in·lbs)

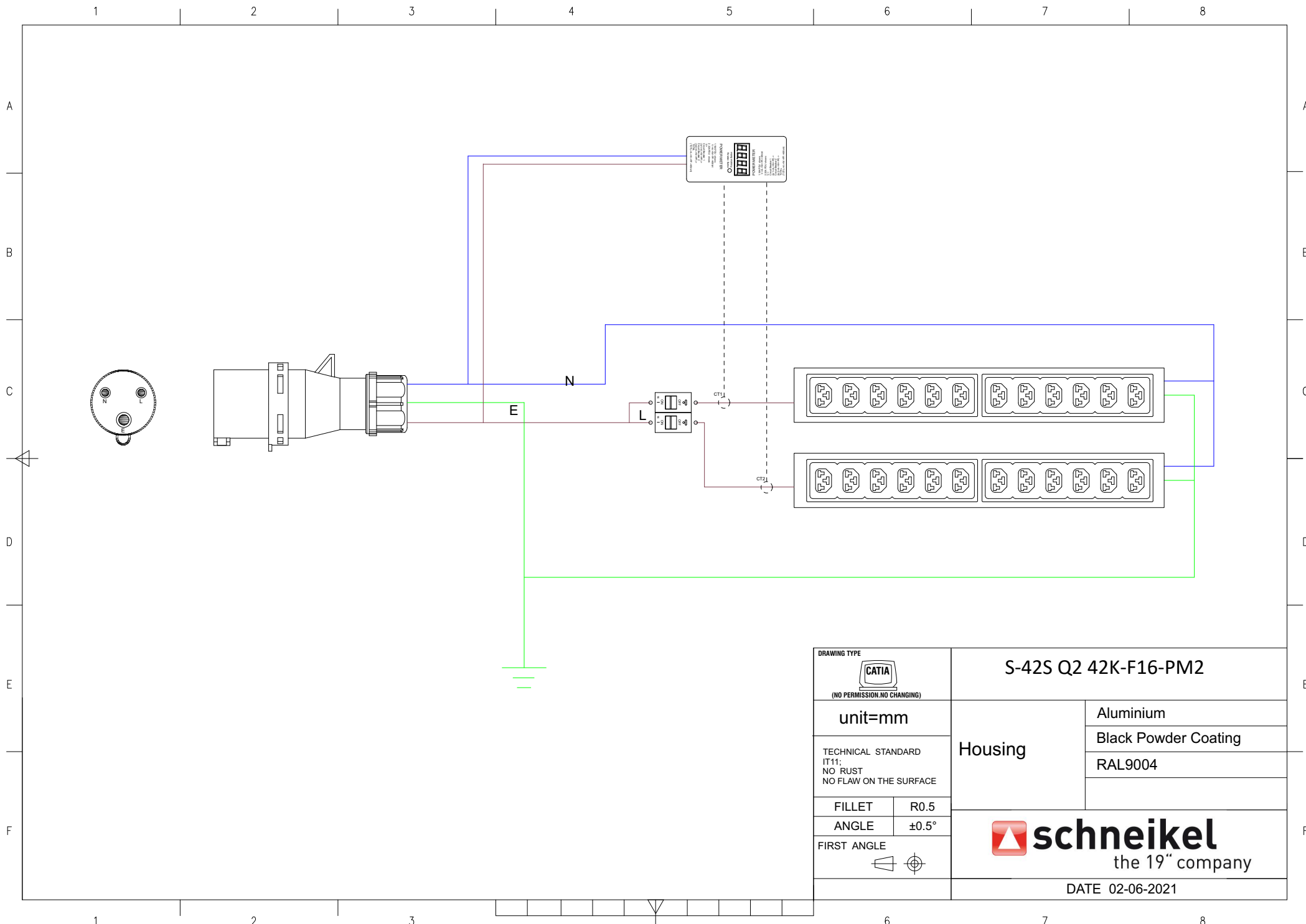
OPERATING ENVIRONMENT


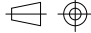
Temperature Range	0° to 60° C (30° to 140° F)
Humidity	0 - 95 %
Elevation	0 - 4000 Meters


CONFORMANCE

IEC 62368-1 (Third Edition)





DRAWING TYPE	
 (NO PERMISSION, NO CHANGING)	
unit=mm	
TECHNICAL STANDARD IT11; NO RUST NO FLAW ON THE SURFACE	
FILLET	R0.5
ANGLE	±0.5°
FIRST ANGLE	
	

S-42S Q2 42K-F16-PM2	
Housing	Aluminium
	Black Powder Coating
	RAL9004
 the 19" company	
DATE 02-06-2021	